

LEARNING AND DEVELOPMENT FUNDING PROCESS

Last updated 10/03/2023



NOTTINGHAMSHIRE
ALLIANCE TRAINING HUB

Learning and development opportunities

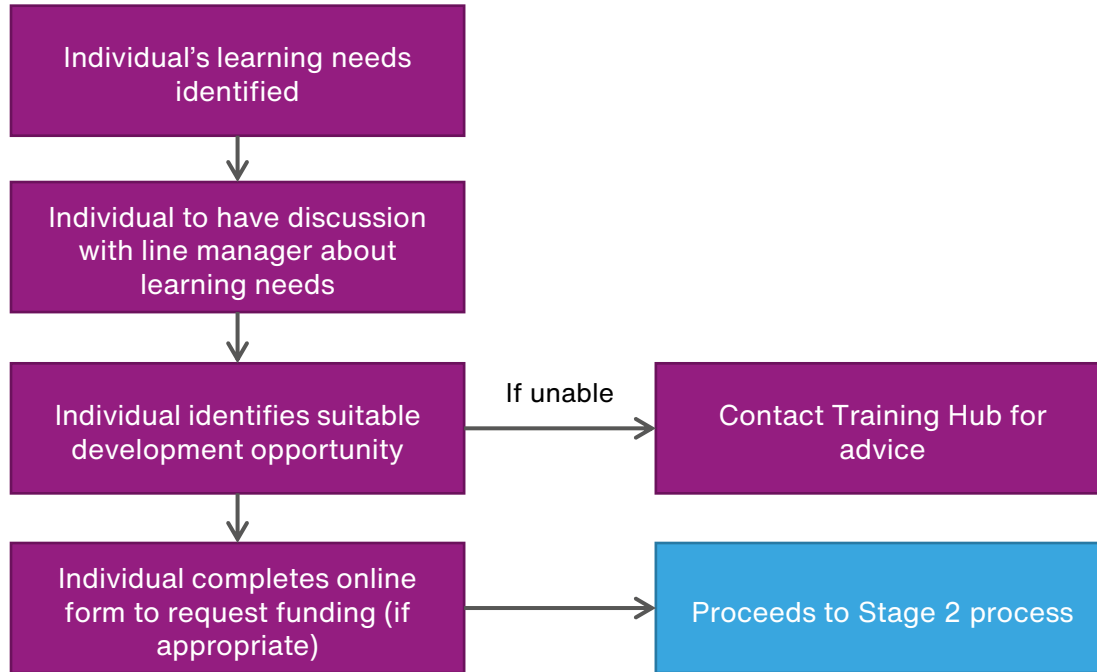
- This document details how the primary care (non-medical) workforce can access funding opportunities for learning and development.
- Once you have read the process please complete the funding request form:
- <https://forms.monday.com/forms/fd41730b10f8447da77dde45ac7db417?r=use1>



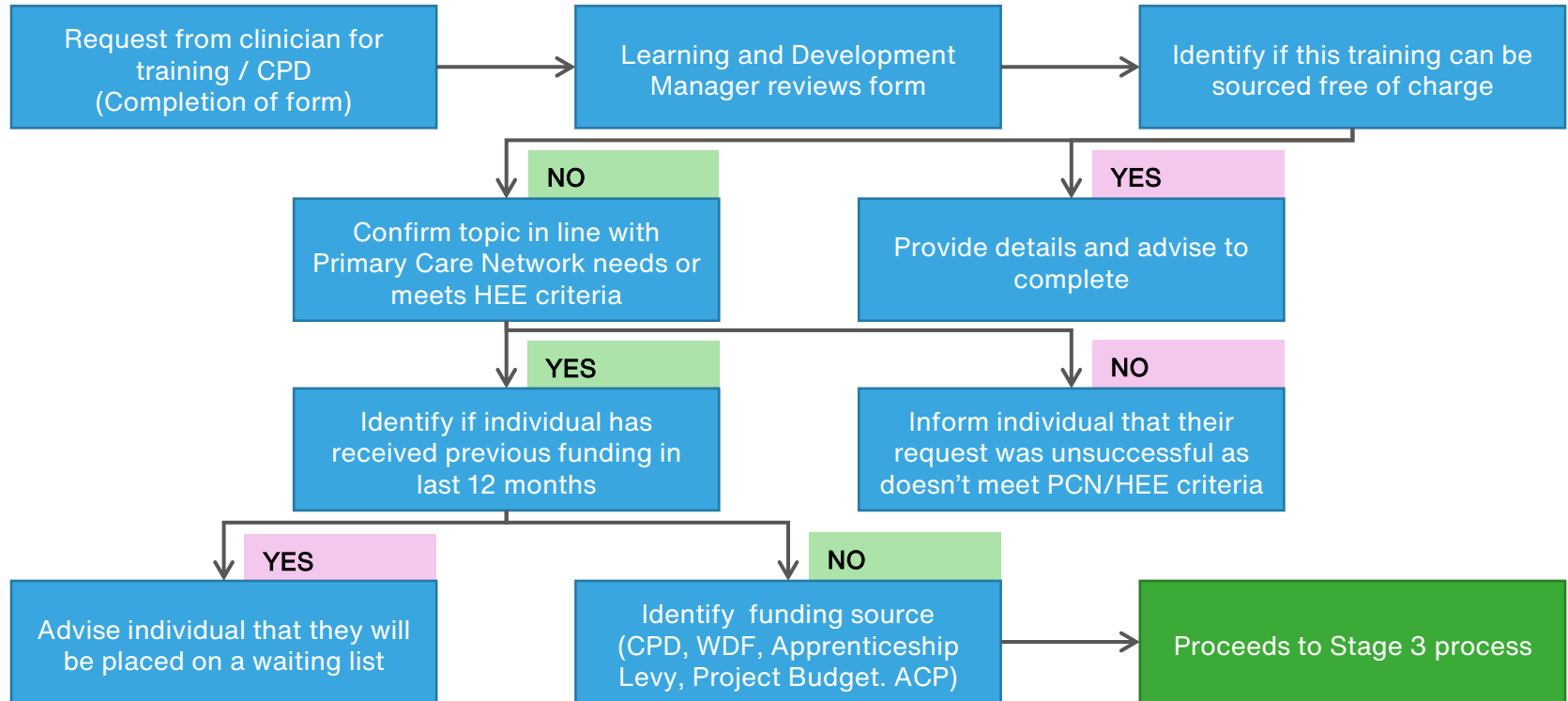
Types of funding available

Name	Description
Continuous Professional Development (CPD)	Health Education England announced funding (£333 per year for 3 years) available to nurses and certain AHPs for CPD.
Project Budgets	NATH may work on a project that comes with funding for workforce development on a particular project.
Workforce Development Funds (WDF)	Health Education England award systems workforce development funds. This can be accessed by the non-medical workforce in primary care.
Advanced Clinical Practice (ACP)	Health Education England award places of full ACP programmes and funding to enable clinicians to 'top up'. These are announced yearly.
Apprenticeship Levy	Nottingham & Nottinghamshire ICS work in partnership to enable the primary care workforce to access apprenticeship levy funds.

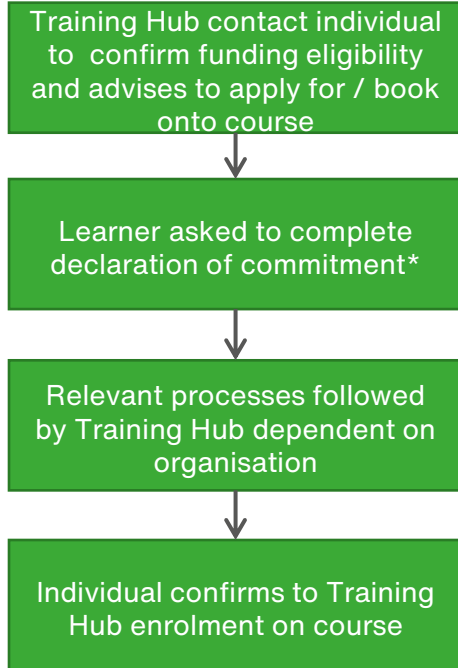
Stage 1 process



Stage 2 process



Stage 3 process



*NB To include notifying training hub when learning completed

Form criteria

- Full name (free text)
- Email (free text)
- Job role (selection)
- PCN (selection)
- Description of learning and development opportunity (free text)
- Cost of training (free text)
- Have you already applied for funding in this financial year (selection)
- What population health needs does the opportunity meet (free text)
- Which Health Education England criteria does this opportunity meet (selection)
- Date need to undertake training by and why, if applicable (free text)
- Any further information (free text)

<https://forms.monday.com/forms/fd41730b10f8447da77dde45ac7db417?r=use1>

NATH communication channels



alliance.hub1@nhs.net



[@NottsAllianceTH](https://www.facebook.com/@NottsAllianceTH)



[Nottinghamshire Alliance Training Hub](https://www.linkedin.com/company/Nottinghamshire%20Alliance%20Training%20Hub)



www.nottstraininghub.nhs.uk

Sign up to our **Newsletter** for the latest information on events, training and funding opportunities



[@NottsAlliance](https://www.twitter.com/@NottsAlliance)



[Nottinghamshire Alliance Training Hub](https://www.email.com/Nottinghamshire%20Alliance%20Training%20Hub)



[@NottsAlliance](https://www.instagram.com/@NottsAlliance)



[Nottinghamshire Alliance Training Hub](https://www.youtube.com/Nottinghamshire%20Alliance%20Training%20Hub)



[Nottinghamshire Alliance of Training Hubs](http://www.nottinghamshireallianceoftraininghubs.org.uk)